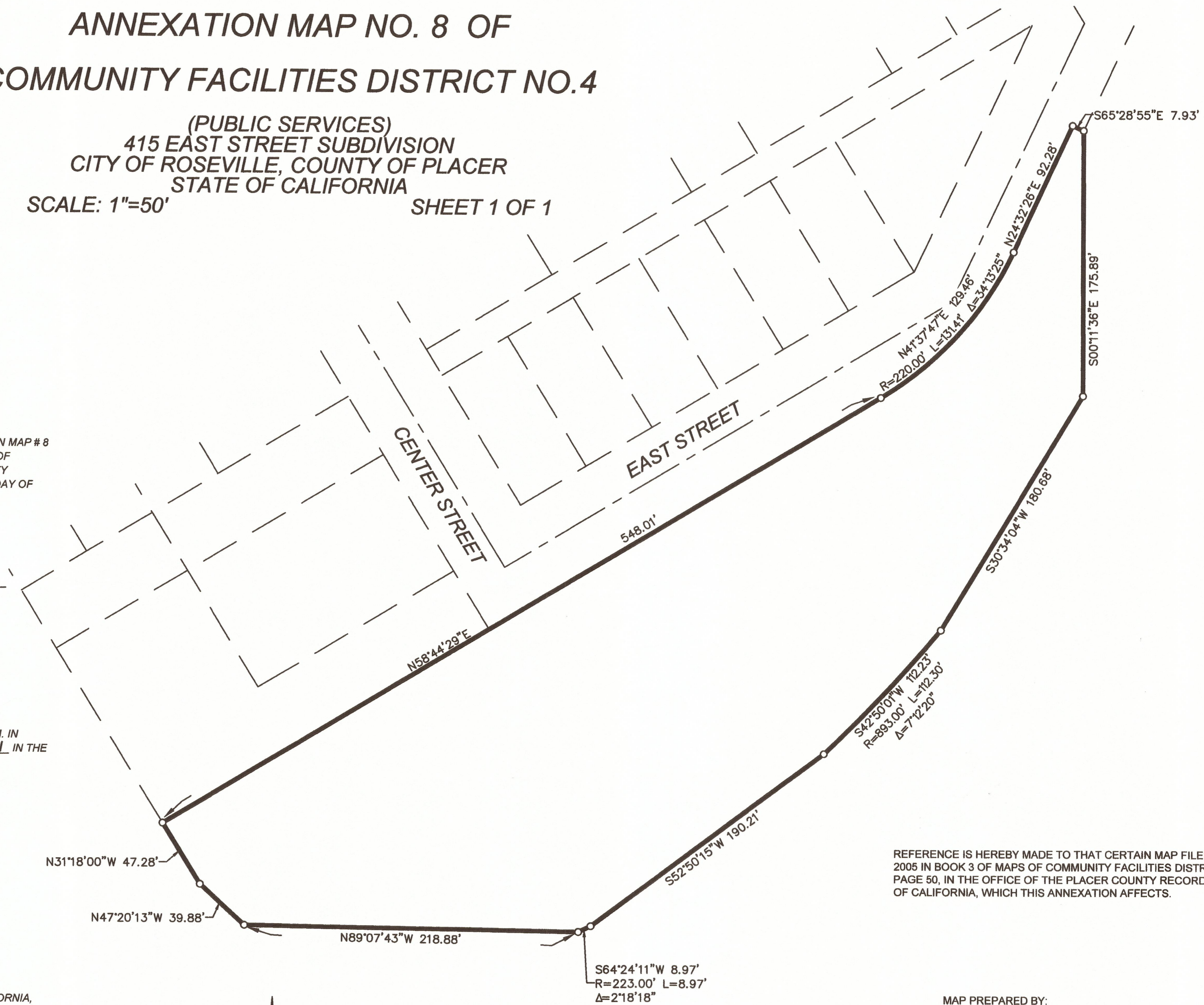


**VICINITY MAP**  
NOT TO SCALE

PROPOSED BOUNDARY MAP  
**ANNEXATION MAP NO. 8 OF  
COMMUNITY FACILITIES DISTRICT NO.4**

(PUBLIC SERVICES)  
415 EAST STREET SUBDIVISION  
CITY OF ROSEVILLE, COUNTY OF PLACER  
STATE OF CALIFORNIA  
SCALE: 1"=50' SHEET 1 OF 1



I HEREBY CERTIFY THAT THE WITHIN MAP SHOWING PROPOSED BOUNDARIES OF ANNEXATION MAP # 8 OF COMMUNITY FACILITIES DISTRICT NO. 4 (PUBLIC SERVICES) CITY OF ROSEVILLE, COUNTY OF PLACER, STATE OF CALIFORNIA, "415 EAST STREET SUBDIVISION" WAS APPROVED BY THE CITY COUNCIL OF THE CITY OF ROSEVILLE AT A REGULAR MEETING THEREOF, HELD ON THE 21 DAY OF April, 2021, BY ITS RESOLUTION NUMBER 21-191.

*Sonia Orozco*  
SONIA OROZCO, CITY CLERK

FILED THIS 5<sup>th</sup> DAY OF May, 2021, AT THE HOUR OF 08:43 O'CLOCK A.M. IN BOOK 4 OF MAPS OF ASSESSMENT AND COMMUNITY FACILITIES DISTRICTS AT PAGE 21 IN THE OFFICE OF THE COUNTY RECORDER IN THE COUNTY OF PLACER, STATE OF CALIFORNIA.

DOCUMENT NO. 2021-0060976  
FEE: \$8.00

*Ryan Ronco*  
COUNTY RECORDER  
COUNTY OF PLACER  
by *Blanco*, Deputy

FILED IN THE OFFICE OF THE CITY CLERK OF THE CITY OF ROSEVILLE, PLACER COUNTY CALIFORNIA, ON THIS 21 DAY OF April, 2021.

*Sonia Orozco*  
SONIA OROZCO, CITY CLERK

REFERENCE IS HEREBY MADE TO THAT CERTAIN MAP FILED ON MAY 3, 2005 IN BOOK 3 OF MAPS OF COMMUNITY FACILITIES DISTRICT AT PAGE 50, IN THE OFFICE OF THE PLACER COUNTY RECORDER, STATE OF CALIFORNIA, WHICH THIS ANNEXATION AFFECTS.

MAP PREPARED BY:

**RFE ENGINEERING, INC**  
Civil Engineers • Planners • Surveyors  
2260 Douglas Blvd, Suite 160, Roseville, CA 95661  
Ph: 916-772-7800 Fax: 916-772-7804  
www.RFEengineering.com

